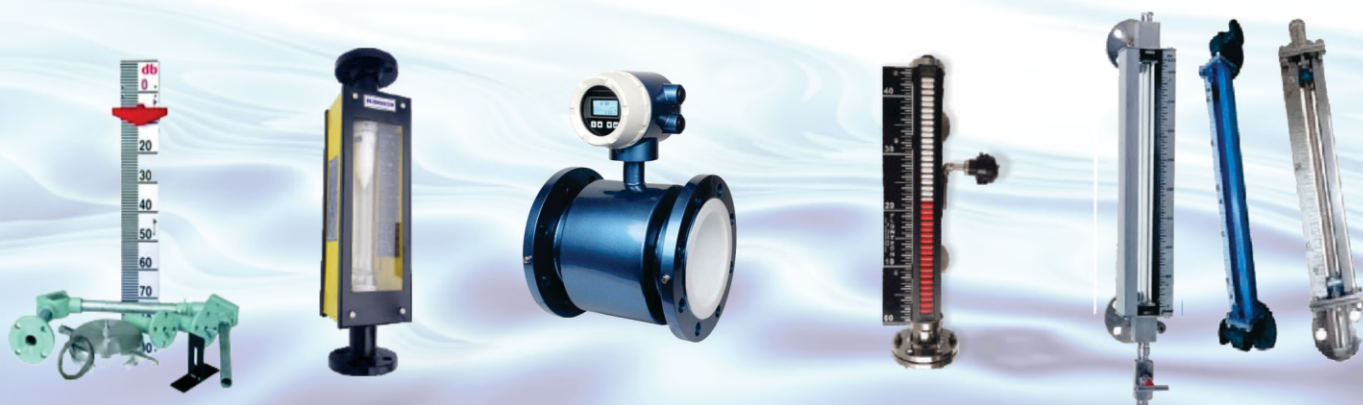




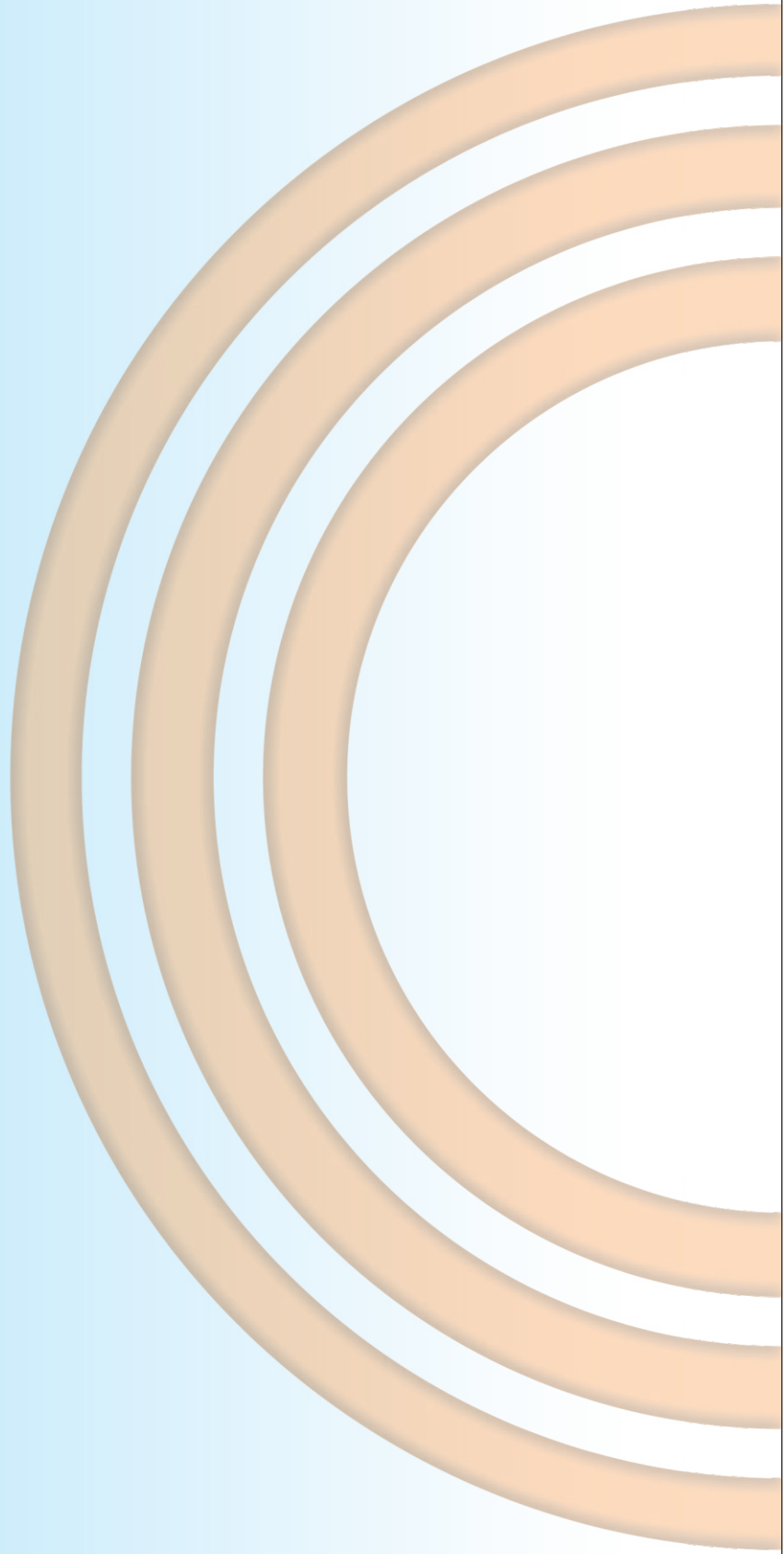
# POWERFLOW

Instruments



# About Us

Powerflow Measuring Instruments is a Manufacturer of Quality level, flow and process control instruments. Established in 2024, the company is a trusted supplier to companies across the global. to accomplish its mission of providing world-class products at reasonable prices to customers, POWERFLOW has set up a plant that is fully equipped machinery, customized production facilities facilities. This ensures a system that inconsistent in credibility and quality. Given the wide range of applications, all products can be adaptability and responsive servicehas ensured that powerflow is a supplier of choice in various that POWERFLOW is a supplier of choice in various state of india .



# Sight Flow Indicators ( Sight Glasses )

## DOUBLE WINDOW

- Size 15 NB to 600 NB
- Drip Tube / Rotating Blade / Flapper for special applications
- MOC: CS, SS-304, SS-316, MS with rubber / FEP / PFA / PP Lined
- Connections: Screwed / Flanged / Socket Weld / TC Joint
- Jacketed for special applications



## FULL VIEW

- Size : 15 to 300 NB
- MOC: CS, SS-304, SS-316, P.P.

# Rotameters

## GLASS TUBE ROTAMETERS

Mainly used for measuring rated flow of liquid and gases.

- Available in C.S., SS-304, SS-316, Poly Propylene, P.T.F.E. lined
- Flanged, Screwed, Hose Nipple & TC Joint connections
- Available from 15 NB to 100 NB pipe size and ranges between 30 to 30,000 LPH of water at ambient temperature and Linear
- Scale having Accuracy of  $\pm 2\%$  FSD
- High & low flow switches



## METAL TUBE ROTAMETERS (MAGNETIC)

Suitable to measure flow rate of opaque / translucent liquid, gases, steam and vapour under critical operating conditions.

- Available in SS-316 / SS-304 / P.P. construction and flanged from 25 NB to 150 NB pipe size and PTFE Lined
- High & low flow switches on request
- Accuracy  $\pm 2\%$  FSD
- Available in 350, 450 and 500 mm
- Available from 15 NB to 150 NB and flow 500 LPH to 50,000 LPH
- Flanged, Screwed, TC Joint, SMS Union
- Flow Transmitter with Digital Display, Totalized with Batch Controller on request

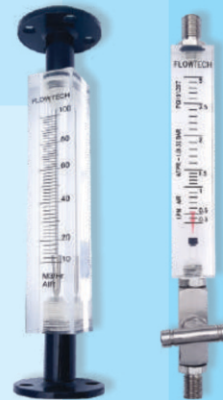


# Rotameters

## ACRYLIC BODY ROTAMETERS

Precisiously machined from Imported Transparent Solid Acrylic Block, Tapering tube is done by special tools.

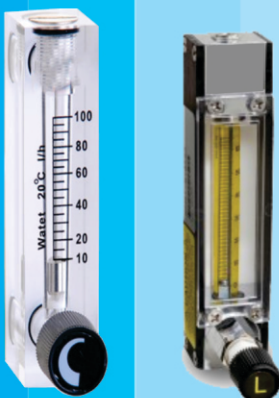
- Suitable for water, saline water, air, N<sub>2</sub>, H<sub>2</sub> and natural gases
- Available from 15 NB to 100 NB pipe size and ranges between 30 to 80,000 LPH of water at ambient temperature
- Accuracy  $\pm 2\%$  FSD
- High & low flow switches on request
- Flanged, Screwed, Hose Nipple & TC Joint connections



## LOW FLOW ROTAMETERS (ACRYLIC / GLASS TUBE)

Suitable for low flow rate of Gas or liquid measurement.

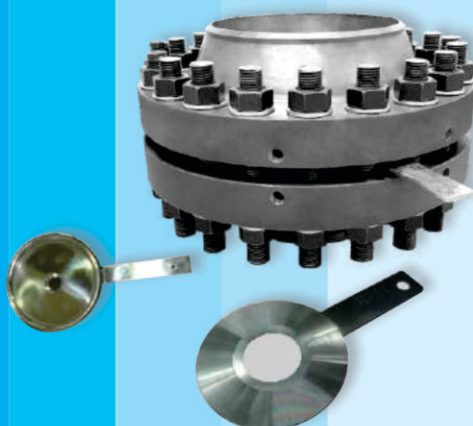
- Available in SS-316 / SS-304 / P.P. / P.T.F.E. lined construction
- Generally screwed with flow control valve at inlet
- 10 LPH to 160 LPH of water at ambient temperature & 20 to 5000 NLPH of air at NTP condition
- Accuracy  $\pm 2\%$  FSD
- Panel mounted with high & low flow switches available
- Flanged, Screwed, Hose Nipple & TC Joint connections



## BY-PASS ROTAMETERS

Suitable for pipeline of 50 NB and above (upto 1000 NB)

- The flow rate through the rotameter is proportional to the pressure drop across the orifice plate
- Available in SS-316 / SS-304 / P.P. material
- Available in Corner tapping (carrier ring), Flange Tapping or D and D/2 Tapping
- Accuracy  $\pm 2\%$  FSD
- High & low flow switches on request
- Installed in both vertical & horizontal Pipe line



## ORIFICE PLATES & FLANGE ASSEMBLIES

Suitable for creating differential pressure in a pipe line for flow transmitter etc.

Orifice flange assemblies consist of weld neck/ socket weld type flanges with standard / RTJ Orifice, studs, nuts, gaskets.

- Available in SS-316 / P.P. material
- Manufacturing range 50 NB to 1000 NB
- Design Standard confirm to BS 1042 / ISO 5167
- Available in IBR for Steam



# Flow Meter

## ELECTRO MAGNETIC FLOW METER (MAG FLOW METER)

It works on Faraday's Law of Electromagnetic Induction. A magnetic field is generated by magnetic coil. The fluid flowing through this magnetic field generates emf (voltage) which is proportional to the flow velocity. This emf is measured by the Electrodes giving corresponding output.

Used for precision measurement of any conductive liquid or slurry that is flowing in closed pipes.

- Empty Pipe Detection
- Display in user selectable Units
- High Accuracy Flow Metering
- Optional Digital Transmission
- 2 Line Alpha numeric backlit display
- No pressure drop in process
- Line size 15 NB to 600 NB
- Accuracy  $\pm 1\%$  of reading
- Flow Range 0.5 to 5 m/s
- Easy maintenance as no moving parts
- Min. Conductivity :  $5 \mu\text{S/cm}$
- Output : 4-20 mA/0-5V, RS485 / pulse output
- Batch controller / GPRS on request
- Protection : Cast Aluminum IP65 Field / Wall Mounted
- Process Temp :  $+ 150^\circ\text{C}$  Max
- Lining : PTFE / Rubber / PP / FEP / PFA
- Local as well as Remote type
- Electrode : SS 316, SS 316L, Hastalloy 'C', Titanium or Tantalum
- Available Data Acquisition software
- Telematrix System on request

### APPLICABLE IN :

- Portable Water
- Chilled Water
- Raw Water
- Corrosive Liquid
- Slurries & Pastes
- Coal Slurry
- Sugar Syrup
- Effluents and
- many more

**DOING ONLINE CALIBRATION OF FLOW METER  
SIZE 50 NB TO 1200 NB THROUGH HIGH ACCURACY  
ULTRASONIC FLOW METER AT SITE ON REQUEST.**



**IN-LINE**

**POWERFLOW**  
Measuring Instruments



**REMOTE TYPE**

**POWERFLOW**  
Measuring Instruments

# Flow Meter

## FLOW TABLE

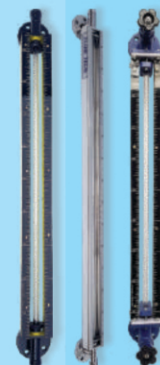
SIZE	LPM		M <sup>3</sup> /HR	
	Min Fluid Velocity @ 0.5m/sec	Max. Fluid Velocity @ 5m/sec	Min Fluid Velocity @ 0.5m/sec	Max. Fluid Velocity @ 5m/sec
15 mm (1/2")	5	50	0.30	3.0
20 mm (3/4 )	9.5	95	0.57	5.7
25 mm (1")	15	150	0.90	9.0
32 mm (1¼")	24	240	1.45	14.5
40 mm (1 ½")	37	370	2.20	22.0
50 mm (2")	60	600	3.53	35.6
65 mm (2 ½")	100	1000	6.00	60.0
80 mm (3")	150	1500	9.00	90.0
100 mm (4")	235	2350	14.10	141.0
125 mm (5")	368	3676	22.07	220.0
150 mm (6")	530	5300	31.80	318.0
200 mm (8")	942	9420	56.52	565.2
250 mm (10")	1471	14710	88.31	883.1
300 mm (12")	2119	21190	127.17	1271.7
350 mm (14")	2884	28840	173.09	1730.9

# Level Indicators

## TUBULAR LEVEL INDICATOR

Simple and reliable device for direct reading in atmospheric or below 5kg/cm<sup>2</sup> Pressurised tank.

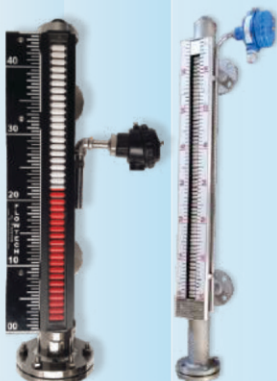
- Bolted gland with teflon packing ensures positive leak tightness for full vacuum as well as 10 Kg/cm<sup>2</sup> pressure
- Available in Aluminium, Acrylic, SS Linearly calibrated scale
- MOC : MS, SS-304, SS-316, P.P., Alluminium, MS with P.P. / P.V.D.F. / FEP / PTFE / Lead lined
- Offset constructed isolation valve on request
- Max. 2000 mm length single piece
- Available in High / Low switch on request



## SIDE MOUNTED MAGNETIC LEVEL INDICATOR

A magnetised float moves with level in external chamber (cage) which is coupled with the tank. Magnetically coupled follower capsule or roller or flapper indicates the liquid level externally.

- Reliable for aggressive, combustible, toxic, high pressure and high temperature (upto 150°C) liquid storage tanks
- Suitable for Ethylene, Benzene, Toluene, Alcohols, Acids, Alkalies, Liquefied gases like NH<sub>3</sub>, Cl<sub>2</sub>, LPG, PCI<sub>3</sub>, SO<sub>2</sub> and poisonous / toxic liquid like DMA, TEA etc
- High and low level switching can be offered in Weather / Flame Proof housing on request.
- Jacketed on request
- Available length upto 5 Mtrs
- Available in SS 316 / SS 304 / Poly Propylene & SS with PTFE Lined
- Available along with Level Transmitter

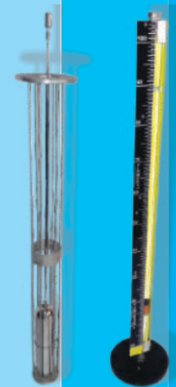


# Level Indicators

## TOP MOUNTED MAGNETIC LEVEL INDICATOR

**Ideal for underground tanks. Suitable for corrosive acids like Sulphuric, Nitric, Chlorosulphuric, Acetic Acid & solvents like Benzene, Acetone, Toluene etc.**

- A float moves inside the tank and a permanent magnet coupled with this float moves externally in a SS pipe. Bi colour P.V.C. capsule follower magnet indicates level externally
- Can offer simple non-magnetic where P.V.C. Bicolour capsule is directly mounted on float which moves in Glass Tube externally
- Level transmitter in Weather Proof / Flame Proof available on request
- Bicolour roller / Flapper option available
- High & low level switch on request



# Level Guages

## FLOAT & BOARD TYPE LEVEL INDICATOR

**Suitable for tall and overhead tanks of non pressurised and non hazardous Chemical storage Tanks.**

- A large Self Centered Float follows the liquid level in this gauge. A rope fitted with a float moves over a pair of dust free pulleys. Level is indicated by a Pointer which moves on a 150 mm width Aluminium Powder Coated Scale
- Mainly used for storage tanks of Oil, Fire / DM Water, Alkalies, Acids, Furnace Oils, Lube Oil, Vegetable Oil, Molasses, Glucose etc
- Vapour Seals (Magnetic) for special applications like HCl, N<sub>2</sub> purged tank, diluted alkalies, dilute HNO<sub>3</sub>, NH<sub>3</sub>, Methanol, Benzene, Toluene, IPA etc
- In vapour seal there is sealing liquids so we get absolute vapour tightness
- Available in completely polypropylene material for diluted acid storage tank



# Level Switches

## TOP MOUNTED

**The level is activating the reed relays incorporated in tubes.**

- Single, Bilevel and Multilevel sensing with potential free contacts
- Stem mounting : Stainless Steel
- Float : SS-316/PU Foam/Poly Propylene/BUNA-N
- Mounting: Flange, Threaded in MS / SS or TC Joint
- Terminations : Cable / DIN Connectors / RTD Head / Weather Proof or Flame Proof Junction Box
- Suitable upto 90 °C and length upto 2 Mtrs



# Manometers



## U-TUBE MANOMETER (GLASS/ACRYLIC)

Used for precision measurement of Pressure and Differential Pressure.

- Zero adjustment scale
- Wall / Stand mounted



## SINGLE LIMB (WELL TYPE) MANOMETER (GLASS/ACRYLIC)

Used for precision measurement of Pressure, Vacuum and Differential Pressure for flow and liquid level measurement.

- All wetted parts made from SS
- Zero adjustment scale
- Wall / Stand mounted



## INCLINED MANOMETER

Used for precision measurement of Pressure and Differential Pressure.

- Zero adjustment scale
- Wall / Stand mounted



# POWERFLOW

## Instruments

Manufacturer of : Glass Tube Rotameter, Side and Top Mounted Level Indicator, Acrylic Body Rotameter, Tubular Level Indicator. Flow Meter, Level Gauge Menometer Etc...

**Plot No.611, G.I.D.C., Makarpura,Vadodara -390010 Gujarat ( India )**  
**E-mail : [powerflowinstrument@gmail.com](mailto:powerflowinstrument@gmail.com) Mobile : +91 9106362053**